

FAMILY AND COMMUNITY ENGAGEMENT PLAN

2018 - 2019



Lilburn Elementary School

August 8, 2018

WHAT IS A FAMILY & COMMUNITY ENGAGEMENT PLAN? This is a plan that describes how Lilburn Elementary will provide opportunities to improve family engagement that will support student learning at school and at home. All students and their families are invited and encouraged to fully participate in the opportunities described in this plan. Lilburn Elementary will provide information and as many opportunities as possible for the participation of all parents and family members.

WHERE IS THE PLAN AVAILABLE?

The School Plan is available in the Lilburn Elementary Parent Center. It can also be accessed on the Lilburn Elementary School web site, under the category of "Title I"

HOW IS IT DEVELOPED AND REVISED?

Lilburn Elementary holds an Annual Title I Planning Meeting, which all parents, staff, and community partners are invited to attend. During this meeting, school data is shared and needs are discussed. With this information in mind, parents and other attendees jointly develop a comprehensive plan to address how parents can be partners with the school, with the purpose of positively impacting student achievement.

Once the policy is developed, stakeholders also assist with planning the Calendar of Events and School-Parent Compacts. These draft documents are available in the Parent Center and on the web site for review and feedback for 8 days following the Planning Meeting. Opportunities for feedback are available following each Family Engagement activities, through anonymous Event Evaluation forms, which are reviewed by the Parent Contact to identify areas that need improvement. Parents have an opportunity to complete an Annual Parent Survey, and there is a suggestion box in the Parent Center. All feedback forms from the Title I Planning meeting are submitted to the Title I Office for review.

"We believe that meaningful, two-way communication between teachers and families will improve academic success for students."

Lilburn Elementary School believes that families are full partners in their child's education. Families play an integral role in assisting with their child's learning. Family engagement means active participation in school events. We will

- Offer a flexible number of meetings at convenient times
- May provide transportation and/or child care as such services relate to parental involvement
- Provide opportunities for regular meetings requested by parents to participate in two-way communication relating to the education of their child such as: Parent/Teacher Conferences, Academic Parent-Teacher Team (APTT), Student Study Team (SST), utilization of e-Class teacher messages, daily agendas, weekly Friday Folders, Parent Portal, Title I Planning, School Council, email, phone conference, teacher websites, school website, and School Messenger text messaging system.

Visit our Parent Center!

Our Parent Center has many resources like books, study materials, games, and activities you can check out to use at home with your child.

Need help finding materials?

Teresa Varela, our parent support person is available to assist you.

678-245-5141

Teresa_varela@gwinnett.k12.ga.us

front hall near the Clinic

Monday-Thursday, 9:30 am –12:00pm

Friday, 8:00 am – 3:00 pm

Computers are available for parents/family members to use to explore the Parent Portal, e-CLASS, and other educational resources to support the learning of their child.

Drop in or schedule a time that Ms. Varela can help you access instructional technology.

✓ Participation in a Title I program benefits your child in many ways!

✓ Title I is a federal program designed to support school reform efforts to improve teaching and learning for all students.

✓ Title I programs are based on effective means of improving student achievement and include strategies to support family engagement.

✓ All Title I schools jointly develop a Family & Community Engagement Plan with parents and family members.

✓ The Title I Office reserves at least one percent of the district's total allocation to fund family and community engagement programs. The use of these funds is based on suggestions gathered at our spring input meeting from families and community members. Funds are distributed equally to all of our Title I schools.

✓ Childcare and/or transportation may be provided for meetings and school events.



Goals of Gwinnett County Public Schools:

Language Arts: All students will graduate as analytical readers, writers, and communicators of language.

Math: Students are expected to demonstrate proficiency through a deep understanding of numeracy with the ability to compute with fluency, think critically, and communicate their mathematical reasoning effectively.

Science: Students will develop a strong content understanding in the earth, life, and physical sciences as well as develop problem-solving and critical-thinking skills.

Social Studies: Students will develop a strong understanding of themselves and their role and responsibility in society by discovering the heritage of their nation within a global context

Goals of Lilburn Elementary:

2017-2018 Goals of Lilburn Elementary School

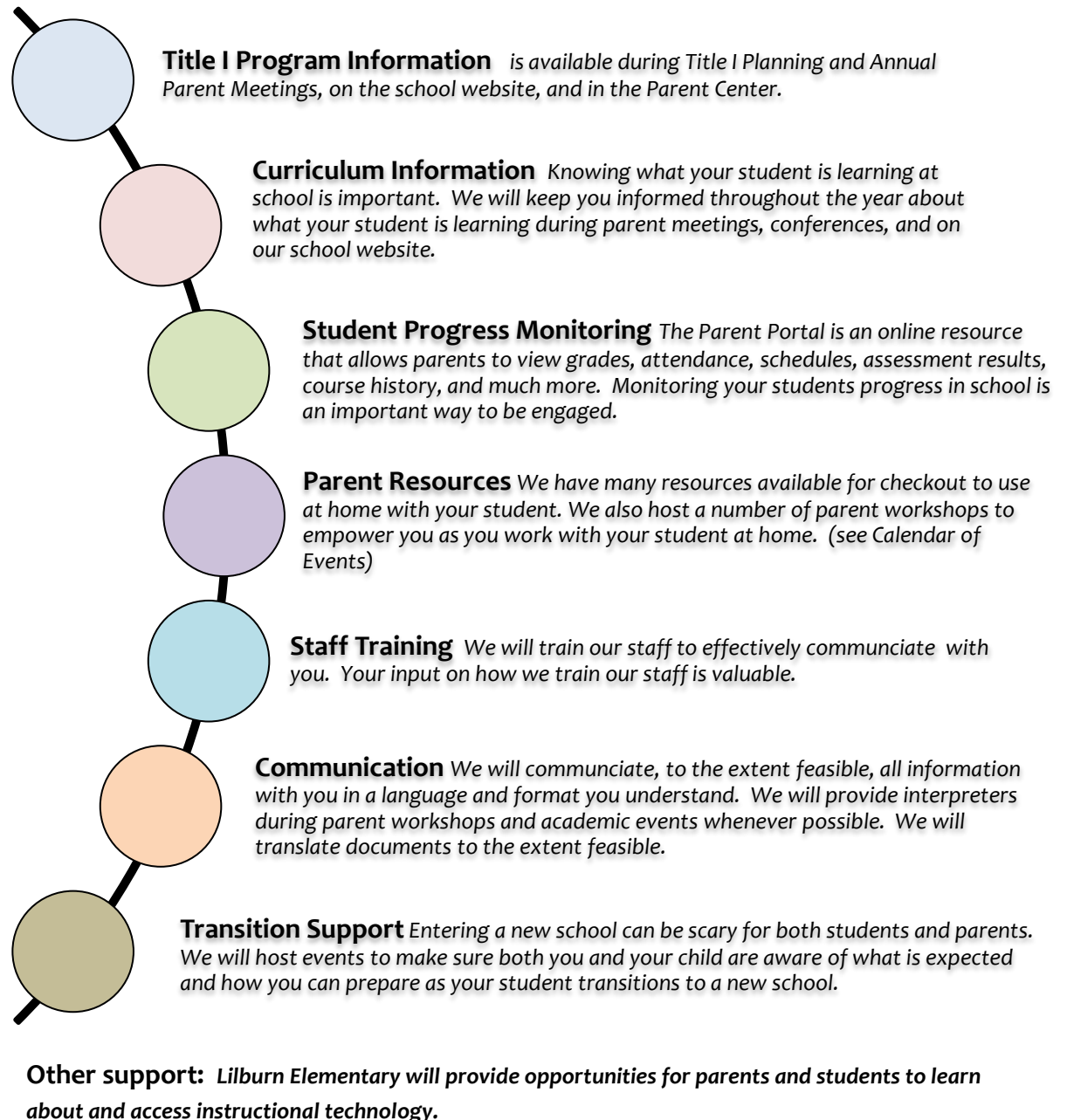
- 1. Attendance and behavior-** Students and staff will have fewer absences. Behavior infractions will decrease.
- 2. Student Growth:** More third, fourth and fifth grade students will perform in the Proficient/Distinguished range on all GMAS subtests. Students will outperform like schools on the GMAS, 2nd and 5th grade students will score higher on all subtests of the IOWA, - 1st through 5th grade students will exceed GCPS averages on district assessments, and more EL students will meet exit criteria on the ACCESS test.
- 3. Parent/Staff/Student Perceptions –** Student, parents, and staff will show increased positive perceptions on school surveys.

School – Family Compacts

Lilburn Elementary will collaborate with parents to jointly develop a school-family compact that outlines how families, students, and the entire school staff, will share the responsibility for improved student academic achievement. The Compact explains how the school and families will build and develop a partnership to help children achieve the high academic standards of the district and state.

- Lilburn Elementary will focus on Language Arts, Fluency and Comprehension across all grade levels.
- Kindergarten, 1st and 2nd grades will set Smart Goals to improve Sight Word Fluency
- 3rd, 4th, and 5th grades will focus on skills needed to improve comprehension

ENGAGING AND EMPOWERING FAMILIES WITH...



ENGAGEMENT MAKES A DIFFERENCE!